

TCEC TRI-COUNTY ELECTRIC COOPERATIVE, INC.



Your Touchstone Energy® Cooperative 

Hi-Lites

Restoring Hope: The Aftermath of Hurricane Helene

In the aftermath of natural disasters, the resilience and unity of communities often shine through in powerful ways. One such example occurred after Hurricane Helene, when linemen from Illinois, including dedicated crews from Tri-County Electric Cooperative, answered the call for help in the wake of the storm's devastation.

When Tri-County's linemen arrived, they were welcomed with gratitude and solidarity by their fellow workers and the communities they were there to assist. For more than two weeks, these linemen worked around the clock, living in tent cities and putting in long hours to ensure that help was available where it was most urgently needed.

Amid challenging conditions, the linemen labored tirelessly to repair downed power lines and restore electricity.

Each restored connection brought a renewed sense of relief to families and businesses.

The aftermath of Hurricane Helene highlighted the critical role cooperatives play in disaster recovery.

Tri-County Electric Cooperative and its dedicated linemen remain committed to supporting their neighbors, ensuring that whenever the next challenge arises, they will be ready to respond.

At the heart of the electric cooperative model is the principle of *Cooperation Among Cooperatives*, which emphasizes the power of collaboration in overcoming shared challenges, particularly during emergencies like storm-related outages.

Through solidarity, teamwork, and compassion, linemen don't just restore electricity—they restore hope. Their efforts serve as a reminder that even in the darkest times, the light of community can shine through.

Continued Page 3

MISSION STATEMENT

To safely provide our member-owners with reliable electric service, superior customer service, and practical energy solutions, all at reasonable prices.

3906 Broadway
Mt. Vernon, IL 62864

618-244-5151
Toll-Free: 800-244-5151
Fax: 618-244-1496
Pay by phone:
855-385-9902

**Mt. Vernon
Office Hours**
Monday - Friday
7:30 a.m. - 4:30 p.m.

**Salem
Office Hours**
Tuesday - Thursday
7:30 a.m. - 4:30 p.m.
(Closed 12 p.m. - 1 p.m.)
www.tricountycoop.com

BOARD OF DIRECTORS

President

Sam Phillips - Salem

Vice-President

Doug Knolhoff - Hoyleton

Secretary/Treasurer

Kathy Withers - Mt. Vernon

Michelle Barbee - Salem

Tom Beyers - Odin

Jordan Brink - Richview

Phil Carson - Oakdale

Christopher Johnson - Belle Rive

Donnie Laird - Waltonville

7 Cooperative Principles

- 1 VOLUNTARY AND OPEN MEMBERSHIP**
- 2 DEMOCRATIC MEMBER CONTROL**
- 3 MEMBERS' ECONOMIC PARTICIPATION**
- 4 AUTONOMY AND INDEPENDENCE**
- 5 EDUCATION, TRAINING AND INFORMATION**
- 6 COOPERATION AMONG COOPERATIVES**
- 7 CONCERN FOR COMMUNITY**

Mascot Pecans and Candies Make the Perfect Christmas Gift!

16 oz. Mammoth Pecan Halves	\$11.00
16 oz. Medium Pecan Pieces	\$10.75
12 oz. Roasted & Salted Jumbo Cashews	\$8.25
4 oz. Pecan Log	\$4.25
8 oz. Pecan Caramel Clusters	\$6.75
12 oz. Chocolate Covered Pecans	\$8.25

Nuts are available, while supplies last, during regular business hours at both office locations of the cooperative.

Mascot Pecans are great for baking, gift-giving, or snacking! All specialty nuts come in a decorative foil bag. The proceeds from the employee Mascot Pecan Fundraiser are donated to community organizations that serve the membership of Tri-County Electric Cooperative. Mascot Pecans are the gift that gives back!

Peanut Butter Cookies

Ingredients

1 cup sugar (or 1/2 c brown & 1/2 c white)
1 egg
1 c. smooth peanut butter

Directions

Mix above 3 ingredients together thoroughly and drop in small round balls and flatten with a fork onto a slightly greased cookie sheet. Bake 10 minutes at 350 degrees.

This recipe is gluten and dairy free!

The Board of Directors and Employees of Tri-County Electric Cooperative wish you a safe and Merry Christmas!



2025 Plan of Work

Luke Johnson
General Manager

The Board of Directors of Tri-County Electric Cooperative has approved the cooperative's work plan for 2025, which includes a series of critical infrastructure upgrades aimed at enhancing the reliability of the electric distribution system. Each year, the cooperative evaluates its system and prioritizes a range of projects to address aging equipment, accommodate growing demand, and improve overall service for its members.

Key initiatives outlined in the 2025 plan include:

- **Pole Inspections:** Tri-County Electric conducts inspections on a regular eight-year rotation, and any poles that fail the inspection process are replaced. This year, pole inspections will take place in the following substation service areas: Dix, Mt. Vernon, and Shiloh.

- **Patoka-Kinmundy Transmission Line (Phase 2 of 2):** A 7-mile stretch of the 3-phase underbuild will be upgraded as part of the second phase of this transmission line project.

- **Reserve Northeast Line (Phase 2 of 2):** This project will involve upgrading 4 miles of aged three-phase conductor, which will help improve system reliability and strengthen the tie line in this area.

- **Sectionalizing:** The cooperative will also be upgrading various system components, including regulators, capacitors, and oil circuit reclosers (OCRs), to improve the overall performance and stability of the electric distribution network.

- **Substation Improvements:** Maintenance and upgrades will be carried out on several substations to improve their reliability, extend the life of key equipment, and boost overall system efficiency.

The goal of these upgrades is to ensure reliable, uninterrupted service for Tri-County Electric Cooperative's members. These planned projects reflect Tri-County Electric's ongoing commitment to enhancing the safety, efficiency, and reliability of its electric grid, benefiting its members and the communities it serves.

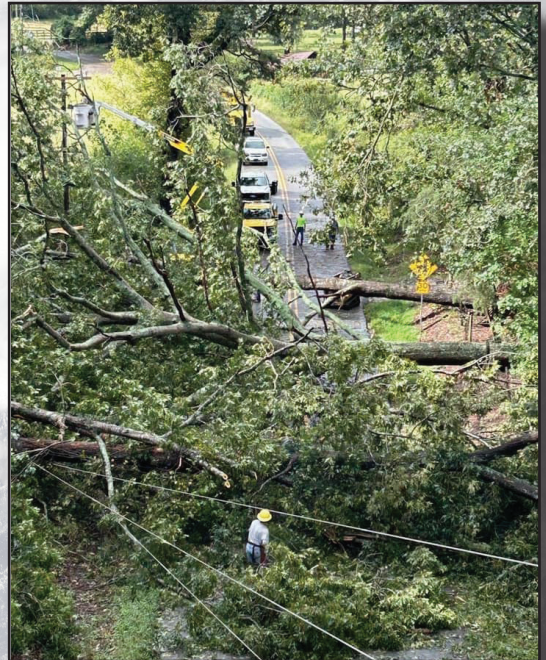
Tri-County Electric Cooperative offices will be closed for:
Christmas Day - Wednesday, December 25th and New Year's Day - Wednesday, January 1st

Cooperatives weather storms together.



Satilla REMC (Jesup, GA) Crew (from left) Justin Tellefsen, Jess Longley, Satilla REMC Bird Dog, Justin Cantrell, and Brannon Dasch

Planters EMC (Millen, GA) Crew (from left) Justin Tepovich, Brent Livesay, Planters EMC Bird Dog, John Shirley, and Scott White



17 Scholarships Available!

The electric cooperatives of Illinois will award 17 scholarships, each worth \$2,500, to outstanding students from the electric cooperative family through the Thomas H. Moore Illinois Electric Cooperatives (IEC) Memorial Scholarship Program.

- Ten scholarships will be awarded to high school seniors whose parent(s) are Illinois electric co-op members, giving these students a bright start on their educational journey.
- The Earl W. Struck Memorial Scholarship is reserved for a student whose parent is an Illinois electric cooperative employee or director, honoring the legacy of service within our cooperative family.
- Five scholarships are dedicated to students enrolling full-time at a two-year Illinois community college, who are also children of an electric cooperative member in Illinois.

- The LaVern and Nola McEntire Memorial Lineworker's Scholarship is designed for those ready to light up the world by pursuing a career in linework and are enrolled or plan to enroll at Lincoln Land Community College's lineworker program. This scholarship supports students of co-op members, relatives of employees or directors, and those who have served or are currently serving in the armed forces or National Guard.

Don't miss out on this opportunity! The general scholarship application deadline is Dec. 31, 2024, and the lineworker scholarship is due by April 30, 2025. For more information, reach out to Tri-County Electric Cooperative or visit tricountycoop.com/scholarships.

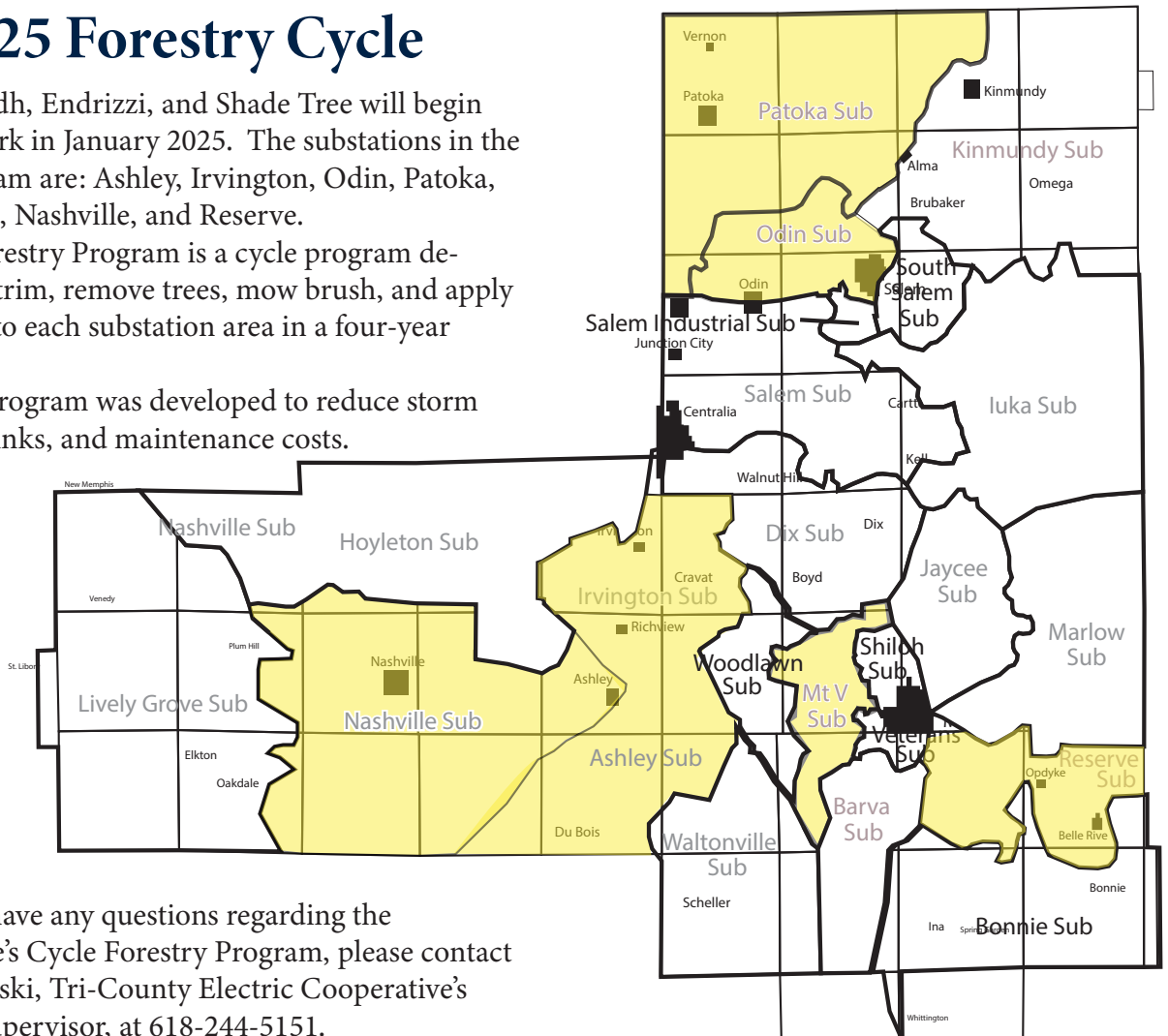


2025 Forestry Cycle

Asplundh, Endrizzi, and Shade Tree will begin forestry work in January 2025. The substations in the 2025 program are: Ashley, Irvington, Odin, Patoka, Mt. Vernon, Nashville, and Reserve.

The Forestry Program is a cycle program developed to trim, remove trees, mow brush, and apply herbicides to each substation area in a four-year cycle.

This program was developed to reduce storm damage, blinks, and maintenance costs.



If you have any questions regarding the cooperative's Cycle Forestry Program, please contact Ben Ceglinski, Tri-County Electric Cooperative's Forestry Supervisor, at 618-244-5151.