



HI-LITES

Never Forget Where We Came From: A Look at Tri-County Electric Cooperative's Roots

As we continue to serve our members and communities with reliable power, it's important to take a moment to reflect on how Tri-County Electric Cooperative came to be. Our story began in 1938, but the foundation of what we do every day goes back even further — to a time when rural America was in desperate need of electricity.

In the early 20th century, while urban areas were quickly being electrified, rural communities across the country were left in the dark. Less than 10% of rural households had access to electricity by 1930. At the same time, nearly 90% of urban American were already connected to the grid. It was a stark divide, one that highlighted the challenge faced by rural families: without electricity, their lives, economies, and futures were held back.

The turning point came with the creation of the Rural Electrification Administration (REA) in 1935 under President Franklin D. Roosevelt.

Roosevelt, who saw the power of electricity as a critical component for economic growth and prosperity, made rural electrification a priority.

It was through the REA that cooperatives like Tri-County Electric were born. Formed by a group of farmers and rural residents in 1938, Tri-County Electric was founded with a shared vision: to bring electricity to our community when no one else would. Power companies weren't interested in bringing electricity to rural America because it wasn't seen as profitable. But these brave and determined individuals understood the power of cooperation.

Continued on page 2

Luke Johnson

General Manager



Mt. Vernon Office
3906 Broadway
Mt. Vernon, IL 62864
Monday - Friday
7:30 a.m. - 4:30 p.m.

Salem Office
1631 E Main St.
Salem, IL 62881
Tuesday - Thursday
7:30 a.m. - 4:30 p.m.
Closed: 12:00 p.m. - 1:00 p.m.

BOARD OF DIRECTORS

President
Sam Phillips, Salem
Vice President
Doug Knolhoff, Hoyleton
Secretary/Treasurer
Kathy Withers, Mt. Vernon
Michelle Barbee, Salem
Tom Beyers, Odin
Jordan Brink, Richview
Phil Carson, Oakdale
Christopher Johnson, Belle Rive
Donnie Laird, Waltonville

Phone: (618) 244-5151
Toll-Free: (800) 244-5151
Pay-by-Phone: (844) 968-1991



Continued from page 1

They pooled their resources, built the infrastructure, and created a co-op that would serve the region for generations to come. We're standing on the shoulders of those who came before us — those who fought for rural electrification, who worked tirelessly to bring power to our homes, schools, and businesses. Their determination and vision have shaped the world we live in today. But now, it's up to us to carry that torch forward.

As we face new challenges, we must remember that our work continues the legacy of those who made rural electrification a reality. We must ensure that the power we provide is reliable, sustainable, and accessible for future generations. Our commitment to keeping the lights on for our communities is as strong today as it was in 1938. 🛠️

Cooperative Calendar

April 11, 2025

Board Petitions Must be Filed
American Red Cross Blood Drive

April 18, 2025

TCEC Offices Closed - Good Friday

June 27, 2025

American Red Cross Blood Drive

July 12, 2025

Annual Meeting - Mt. Vernon

Sauerkraut

Ingredients

- 2 1/2 lb. Head of Cabbage
- 3 3/4 tsp. salt
- Water



Directions

1. Prepare cabbage: Weigh cabbage, remove damaged outer leaves, cut out core, rinse, and drain. Set aside 1 outer leaf.
2. Shred cabbage: Sprinkle salt (1 1/2 - 2 tsp. per pound of cabbage) and toss. Let sit for 15 minutes.
3. Massage cabbage: Massage for 5 minutes until liquid is released.
4. Pack into jar: Firmly pack cabbage into a clean jar and pour the cabbage liquid over it. If needed, top off with a 2% salt water solution (1 tsp. salt per cup of water) until the cabbage is completely submerged.
5. Place reserved cabbage leaf on top, weigh it down, and cover with a plastic lid.
6. Ferment: Store jar on a rimmed pan at room temperature for 1-4 weeks, checking liquid levels. You may notice a layer of bubbles or foam forming on the surface. Gently skim this off to keep your sauerkraut fresh and vibrant.
7. Store: Once fermented to your liking, refrigerate. Keep cabbage submerged in liquid. Optionally, add herbs or other veggies. Discard the batch if you notice unusual smells, colors, or mold. Improper handling may lead to foodborne illness.



Clearing the Path to Reliable Power

Trees are beautiful and beneficial, but they can also interfere with power lines, affecting reliability. Tri-County Electric Cooperative works to balance preserving nature with providing dependable service. Regular tree trimming offers several important benefits.

Reliability

Keeping trees clear of power lines improves service reliability. Fallen limbs during storms are a leading cause of outages, with overgrown vegetation responsible for about half of all disruptions. Regular trimming prevents issues, reducing maintenance costs and boosting reliability.

Safety

Trees near power lines pose safety risks to both members and lineworkers. Overhanging branches can create dangerous conditions, especially during storms. Tree branches can touch power lines, allowing electricity to arc or fall on nearby structures. Proactive trimming

reduces these dangers, making it safer for both members and lineworkers.

Affordability

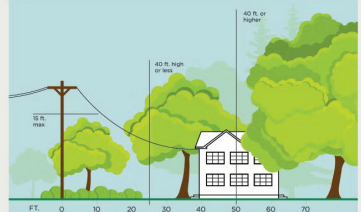
Tri-County Electric Cooperative keeps costs low for members by maintaining a strategic vegetation management program. Left unchecked, overgrown trees become costly to correct. You can also help by planting trees safely. Medium-sized trees (up to 40 ft.) should be planted 25 ft. from power lines, while taller trees should be at least 50 ft. away.

Tri-County Electric Cooperative has the following contractors on site: Asplundh, Endrizzi, and Shade Tree. The substations in the 2025 program are: Ashley, Irvington, Odin, Patoka, Mt. Vernon, Nashville, and Reserve. Our proactive forestry clearance approach reflects our commitment to delivering reliable and affordable electric service while maintaining safety and the natural beauty of our community. For more information, visit www.tricountycoop.com/forestry-clearance. 🛠️

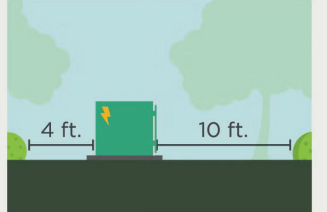
3 Ways to Help Limit Tree Trimming

Did you know electric utilities are required to trim trees and other types of vegetation that grow too close to overhead power lines? We know you love your trees, and we will do everything we can to avoid trimming them. Here's how you can help:

1. Plant trees in the right place. Trees that will be <40 ft. should be planted at least 25 ft. away from power lines (>40ft. should be at least 50 ft. away).



2. Don't block pad-mounted transformers. Plant shrubs at least 10 ft. away from transformer doors and 4 ft. from transformer sides.




3. Report dangerous branches. If you spot a tree or branch that is dangerously close to power lines, please let us know.



Trimming improves safety for all. Let's work together to enjoy the beauty of trees and reliable electricity.




member-owned HOMETOWN ELECTRIC COOPERATIVE




Your Account

Manage your account and pay your bill with one click.




Apply For Service

Start, stop, or transfer service



Outage Map

View power outages in your area.



Mobile App

Download the SmartHub mobile app to manage your account.

Exciting Updates to our Website: New Features to Serve You Better!

We're excited to announce that our website has been updated and it's full of features that make managing your TCEC account easier than ever!

- **Outage Map:** View real-time outage updates and expected restoration times.
- **Apply for Service Online:** Start a new service from the comfort of your home.
- **Transfer Service Online:** Easily transfer your service when moving.
- **Security Light Requests:** Request installation, repair, or replacement of security lights online.

- **Report Trees Near Power Lines:** Let us know about trees too close to power lines for our forestry team to address.
- **SmartHub:** View and pay your bill, track usage, and manage your account online.

We're constantly working on more improvements, so stay tuned for future updates. Visit our website today and take advantage of these convenient features! Make things even easier by downloading the SmartHub app and manage your account on your mobile device. *More details below.* 📱

How do I get the SmartHub app for my smart phone or tablet?



Android Users



Apple iOS Users

